

MASSIVE[®]

D BLOCK SERIES FULL RANGE A/B AMPLIFIERS

D **800.4**



Massive Audio Inc.
2261 S. Atlantic Blvd.
City of Commerce, CA 90040 U.S.A.
www.massiveaudio.com

©2010 Massive Audio Inc.
Printed in the U.S.A.

V.012005

®

INTRODUCTION

Congratulations!

And thank you for purchasing a “Massive Audio” D Block Series class A/B full-range amplifier for your car audio system. You now own an amplifier of uncompromising design and engineering incorporating the latest advances in circuitry. This handcrafted amplifier is designed to deliver the demands of serious sound competitors. You will soon discover that D Block Series amplifiers display a fine balance between high quality, performance and reliability; all proven qualities of “Massive Audio” products.

“Massive Audio” amplifiers are the result of the latest advancements in technology using only the highest quality components and quality control standards. In order to provide you with many years of listening pleasure, we recommend you to have your new amplifier installed by an Authorized “Massive Audio Dealer.” This will ensure the proper installation of your product, and will also increase the length of your warranty to **ONE YEAR**.

(Please see the warranty section for more details.)

Please take a moment to thoroughly read this manual to ensure that you get the maximum benefit from this new addition to your car audio system. When installed properly, this unit will provide years of trouble-free performance.

Should your amplifier ever need service or replacement due to theft, please record the following information, which will help protect your investment.

Model #: _____

Dealer's Name: _____

Date of Purchase: _____

Installation Shop and Date: _____

WARRANTY

- Massive Audio, Inc. warrants all manufactured amplifier products to be free from defect in material and workmanship for a period not to exceed **ONE YEAR*** from the date of original purchase when installed by an authorized “Massive Audio” dealer. Units that are not installed by an authorized “Massive Audio” dealer maintain a warranty not to exceed 90 days from the original purchase date by the original purchaser.
- **Products that displays abuse such as power deficiency, over driving the amplifier or clipping the input require purchase of new PCB for replacement.**
- “Massive Audio” obligations under this warranty are limited to repairing or replacing, at its own sole option, any such defective products. This warranty does not apply to equipment that has been damaged by accident, negligence, or misapplication or has been altered or modified in anyway. This warranty applies only to the original purchaser who must have properly registered the product within 10 days of purchase.

Except as provided herein, Massive Audio, Inc. makes no warranties or representations, express or implied, including any warranty implied by law, whether for merchantability or fitness for a particular purpose and shall be effective only for the period that this express warranty is effective. SEE THE WARRANTY REGISTRATION CARD TO ADDITIONAL INFORMATION.

*DUE TO CONSTANT IMPROVEMENT PRICES AND SPECS ARE SUBJECT TO CHANGE WITHOUT PRIOR NOTIFICATION.

TROUBLE SHOOTING

MALFUNCTION

SHOULD CHECK

Power LED doesn't light up	check all fuses on the amplifier check main fuse near the battery check plus and minus battery cables check remote voltage
Power LED is on but no sound	check volume control on the radio check GAIN regulator on the amplifier check RCA cables and connections check speaker cables and connections
Bass response is low	one speaker cable could be disconnected the bass control on the radio is set on low an active crossover unit is adjusted wrong
The amplifier switches On and Off	bad chassis ground connection to the amplifier cable terminals and battery terminals are oxidated low voltage from the battery remote wire is not connected right
One channel has no function	check RCA connections of this channel check speaker connection of this channel balance regulator to the radio is not set in the middle check speakers for this channel

For additional questions please contact your authorized Massive Audio, dealer.

DESIGN FEATURES

- ☒ **SMD Hi-Fi audio components**
- ☒ **FR4 Super Heavy duty Double sided PCB.**
- ☒ **Input sensitivity low level: 120mVrms ~ 5.0 Vrms**
- ☒ **Hi-Fi E-cap Filter with wide dynamic range for clearer sound reproduction.**
- ☒ **Proprietary Noise Rejection Circuit**
- ☒ **Smart protection circuit design zero tolerance short circuit, thermal, reverse voltage and over voltage protection.**
- ☒ **2/4 Channel Button**
- ☒ **Frequency response: 10 Hz - 25 KHz**
- ☒ **Variable crossover: 50 - 800 Hz / 18dB**
- ☒ **Heavy duty power supply.**
- ☒ **Illuminated logo.**
- ☒ **Heavy duty aluminum heatsink.**
- ☒ **Designed and engineered in U.S.A.**



AMPLIFIER FUNCTIONS

1. Speaker connection

- Never connect the speaker cables with the chassis ground. This could destroy your amplifier.
- Check that your speakers are connected correctly which means plus to plus and minus to minus

We recommend speaker cable from 16 gauge and up. Other connection variations are shown attached.

2. BATT+

Battery + (plus) terminal. The + (plus) 12 Volt power cable must be connected with a fuse on the battery + (plus) terminal. We recommend a fuse listed on page 5 and a copper cable with a thickness of 8 gauge and up for cable length up to 12 feet (5 meters).

3. REM

Remote terminal. The remote cable must be connected with the radio automatic antenna terminal so that the amplifier will switch on and off automatically with the radio. If there are 2 or more amplifiers connected to this antenna terminal it might be necessary to add an additional relay. Please consult your dealer.

4. GND

Chassis ground-terminal. The chassis ground cable must be connected very tightly on a nearby solid and electric conductive place.

5. Gain

Gain control regulates the sensitivity of the amplifier to match the signal output voltage of your source unit.

The Gain control is not intended for volume adjustment.

Use high quality CD music and increase the volume of your source unit to 75%.

Position the Gain at the minimum and then slowly increase Gain (clockwise).

Stop at the first sign of distortion, then lower the Gain a little (counter clockwise) to achieve clear undistorted music at the maximum level.

6. RCA audio-input

These RCA inputs are to be connected with your radio preamp RCA outputs. Please use RCA cables made for car audio, otherwise there could be disturbances. Keep these cables as short as possible. To avoid disturbances from your car electronics, install the RCA cables away from existing car cables. If your radio has only one preamp output please use a suitable Y-RCA adaptor. If your radio has only speaker outputs you must use a HIGH-LOW-LEVEL adaptor.

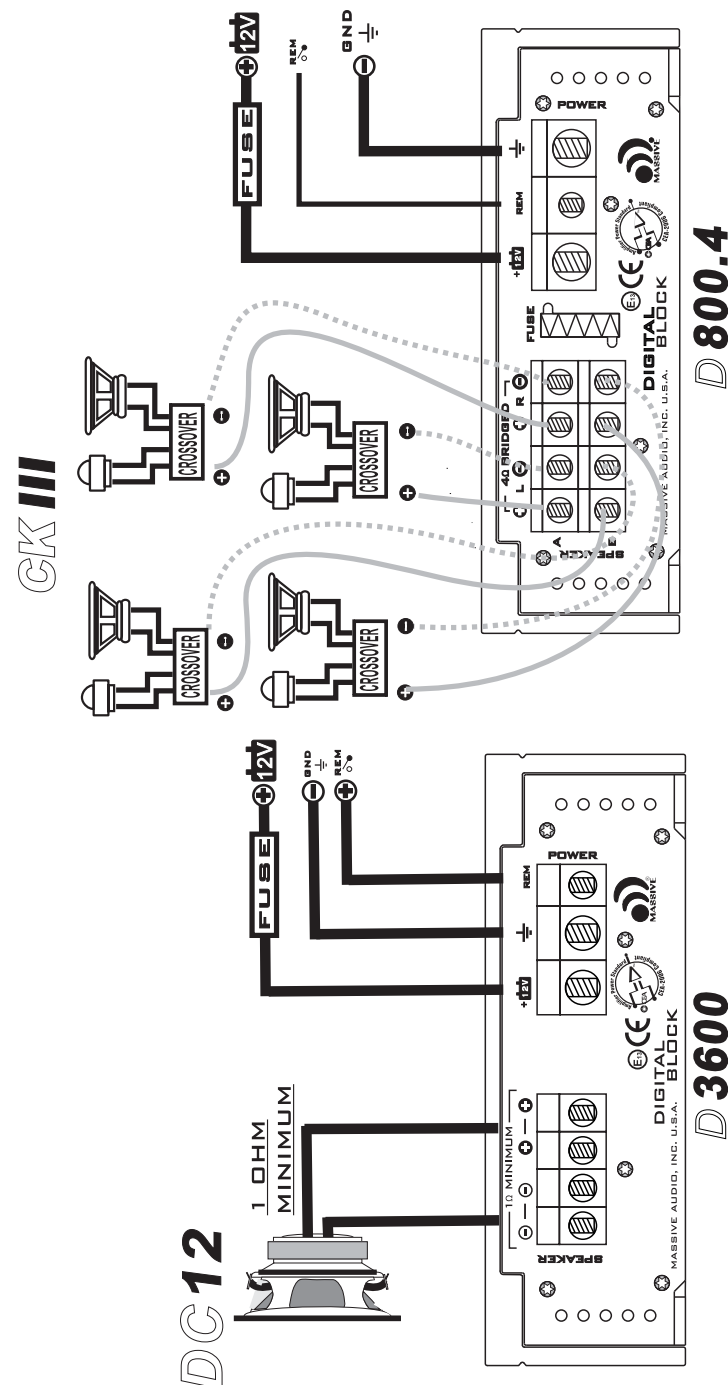
7. CROSSOVER SELECTOR

This switch and knob controls the low Pass Filter, High Pass Filter and Full band function. When set to LPF and HPF, the cut off frequency can be adjusted by the frequency knob.

8. Power LED

The LED lights when the amplifier is switched on. When the amplifier has problems, this LED will shut down while the protection LED lighting.

TWO AMPLIFIERS 5CHANNEL SYSTEM



SPECIFICATION

Model Number	D800.4
4ohm RMS power at 13.8V (THD<1%)	120W x 4
4ohm Bridged power at 13.8V (THD<1%)	480W x 2
HPF Frequency	50~750Hz
HPF	18dB
LPF Frequency	50~750Hz
LPF	18dB
Frequency Response (-3dB)	15Hz~25000Hz
Channel Separation	>80dB
Damping Factor(@4Ω Per Ch/50Hz)	>500
Input Level	0. 2V~5V
Advanced protect system	YES
Fuse	40A
Voltage Range	DC10V~16V
Dimension (mm)	267x165x53
Dimension (inch)	10.5x6.5x2.1

9. Protection LED

This LED lights up in case of any malfunction or internal damages. It also shows if the amplifier is short-circuit, overload, over-heat or low voltage protection as activated.

10. 4CH/2CH switch

This switch is for 2ch / 4ch input function, when at 4ch position, the amplifier works as 4-ch separate input. When at 2ch position, CH-B input will be paralleled to CH-A, CH-B input jack will be dummy at same time.

Note: Please check the cable connection and remove the malfunction while protecting LED light up. Extended mis-operation or overload can damage the amplifier.

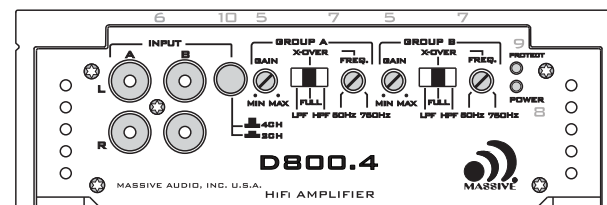
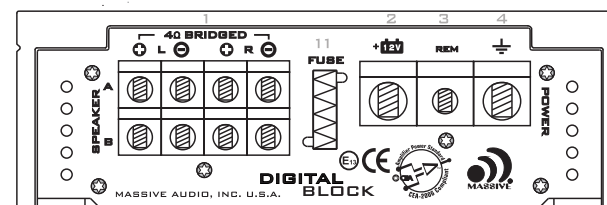
11.FUSE

To protect the amplifier when current drawn is more than rated.

Never replace a fuse with a higher amp fuse.

Never replace a burnt fuse before checking the system for cause of malfunction.

Never bridge a fuse.



PRE INSTALLATION

We recommend to have the installation done by an Authorized Massive Audio, Dealer.

Required Power, Ground Connection and proper external fuse as indicated below:

Model	Fuse	Wire
D800.4	40 AMP	4 to 8 Gauge

We recommend a fuse to be installed within 16 inches of the battery.

The Ground Wire should be connected directly to the chassis of your vehicle with a metal to metal ground point connection.

The amplifier must be securely mounted to a solid, dry and low vibration surface in the trunk or passenger area.

Position the amplifier in an area with sufficient air flow to insure proper heat dissipation.

Position the amplifier for an easy access to the input-setting controls.

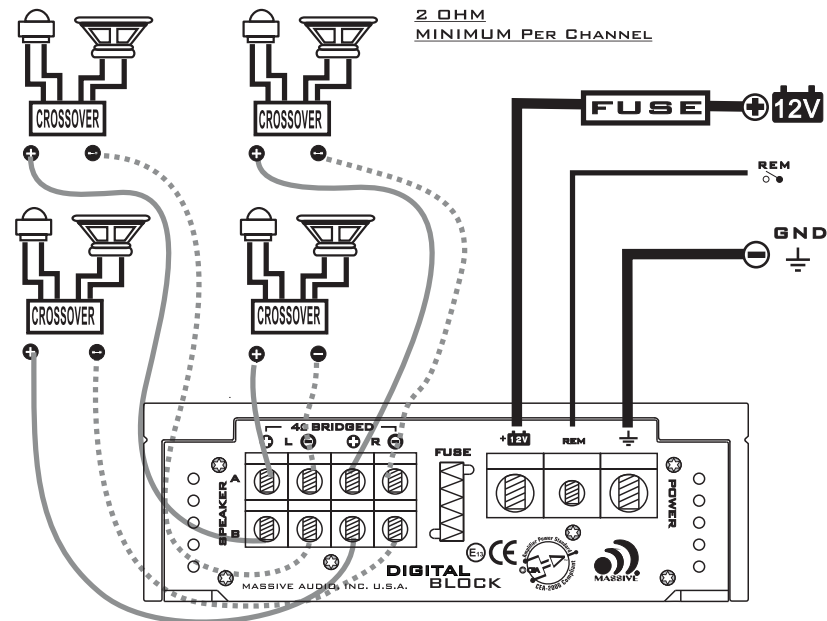
Install all amplifier cables as far as possible from car electrical cables. i.e. The car ignition cable.

OUTPUT WIRING CONFIGURATION

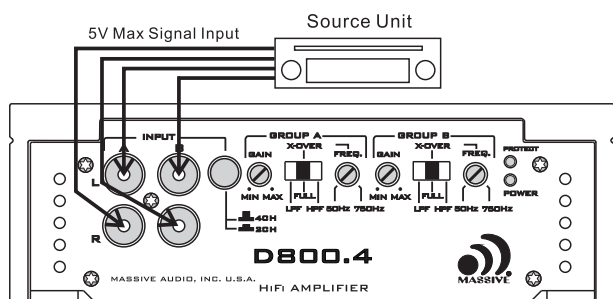
D800.4

FOUR CHANNEL MODE

2 OHM
MINIMUM PER CHANNEL



INPUT WIRING CONFIGURATION



D800.4

2 OHM
MINIMUM CHANNEL A L+R STEREO
4 OHM
MINIMUM CHANNEL B BRIDGED MONO

